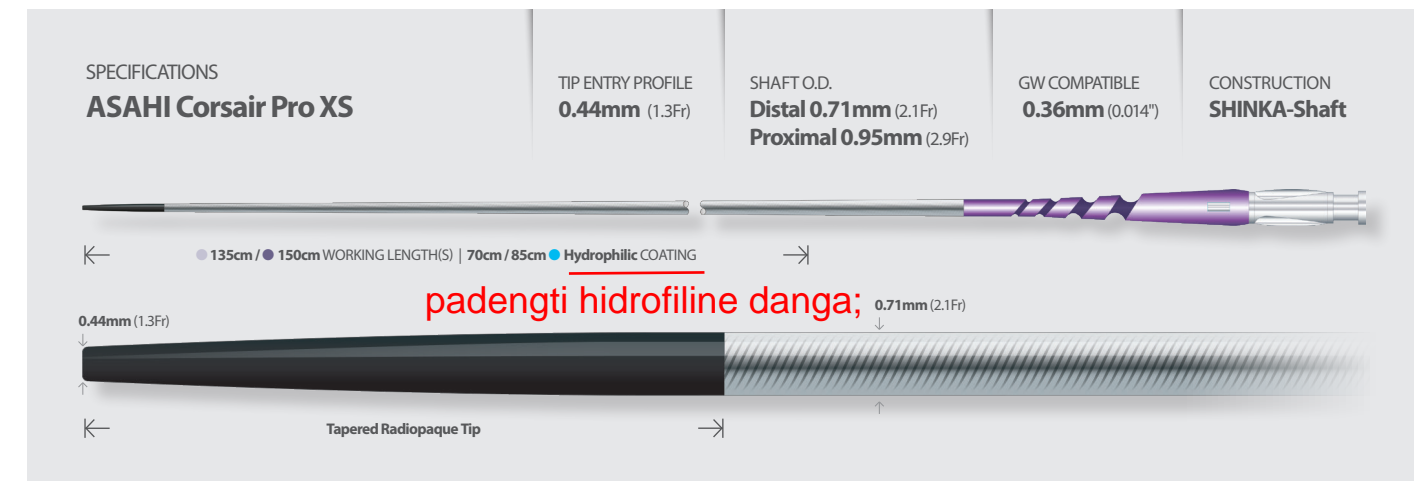


# ASAHI Corsair Pro XS

## Simplify Retrograde Complexity

The new SHINKA-Shaft increases device performance by maintaining flexibility and durability



Catalogue No.	Outer Diameter			Inner Diameter		Usable Length	Recommended GW
	Tip	Distal Shaft	Proximal Shaft	Tip	Shaft		
CSR135-21S	0.44mm (1.3Fr)	0.71mm (2.1Fr)	0.95mm (2.9Fr)	0.38mm (0.015 inch)	0.48mm (0.019 inch)	135cm	0.36mm (0.014 inch)
CSR150-21S	0.44mm (1.3Fr)	0.71mm (2.1Fr)	0.95mm (2.9Fr)	0.38mm (0.015 inch)	0.48mm (0.019 inch)	150cm	0.36mm (0.014 inch)

(vidinis diametras - ne mažesnis nei 0,015", išorinis diametras ne didesnis nei 0,019");



© 2020 ASAHI INTECC CO., LTD  
"ASAHI" and "Corsair Pro" are trademarks or registered trademarks of ASAHI INTECC CO., LTD. in Japan and other countries.

Manufactured by:

Distributed by:



ASAHI INTECC CO.,LTD.

3-100 Akatsuki-cho, Seto, Aichi 489-0071 Japan  
TEL:+81-561-48-5551 FAX:+81-561-48-5552  
www.asahi-intecc.com

K20231\_B\_LC\_1.0

**ASAHI**  
**Corsair Pro XS**  
*Microcatheter*

mikrokaterio darbinis ilgis - ne mažiau kaip 135 cm



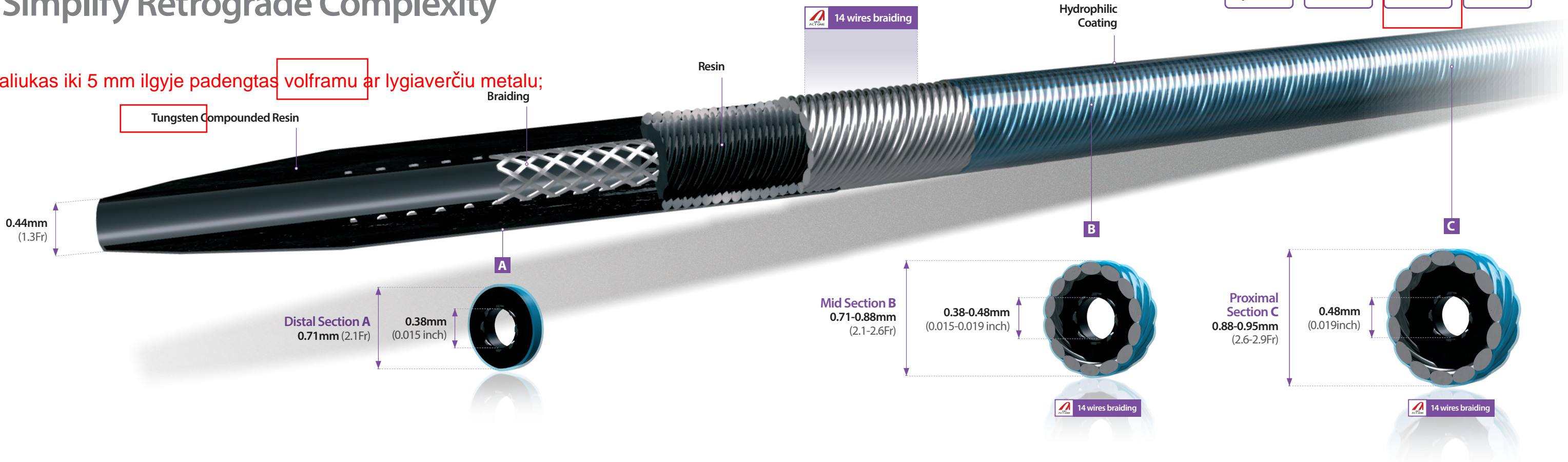


stumiant mikrokateter j galima sukti bet kurią pusę bent 10 kart (be žalos mikrokateterio funkcionalumui).

# ASAHI Corsair Pro XS

## Simplify Retrograde Complexity

galiukas iki 5 mm ilgyje padengtas volframu ar lygiaverčiu metalu;



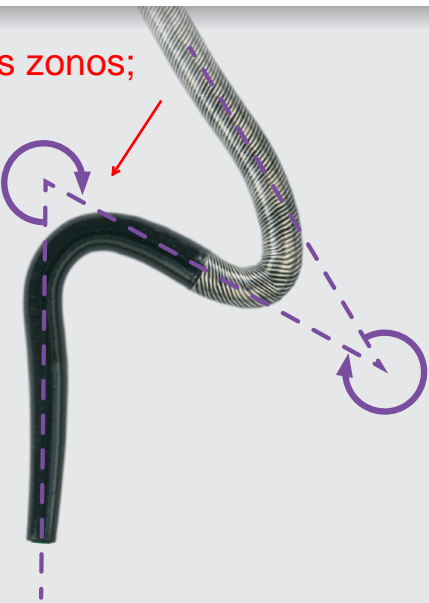
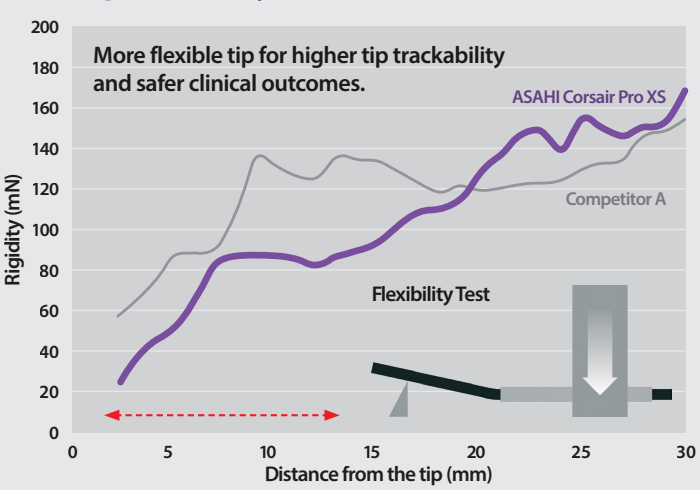
LOW  
Tip Profile

2.1 Fr  
Microcatheter

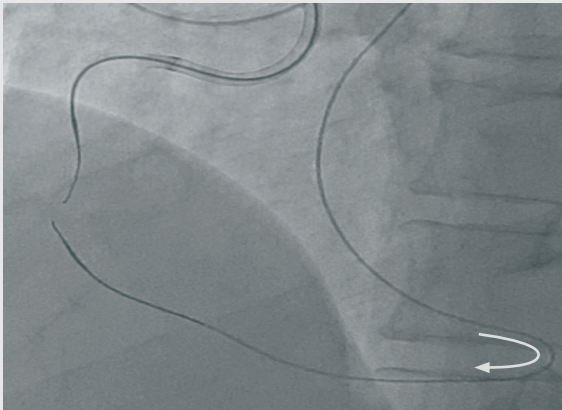
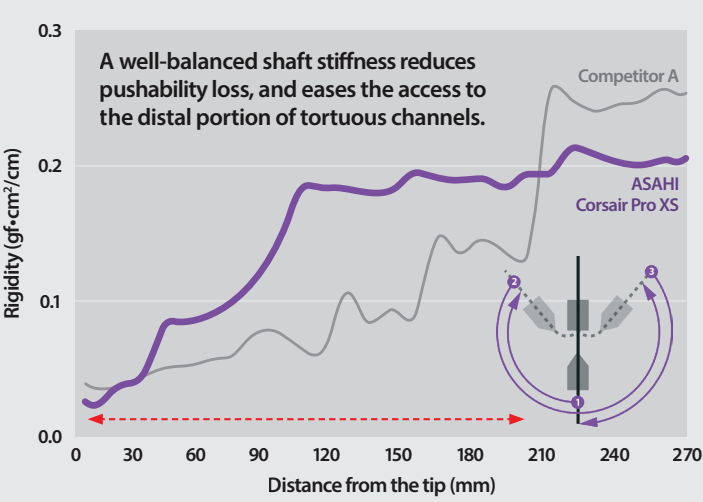
10  
Torqueable

Flexible & Trackable

galiukas prijungtas prie kateterio k no be standžios zonos;



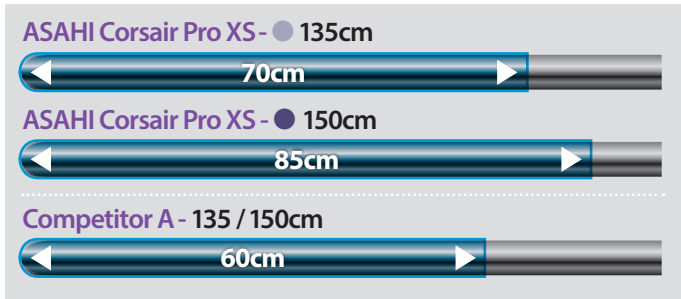
### Shaft Stiffness



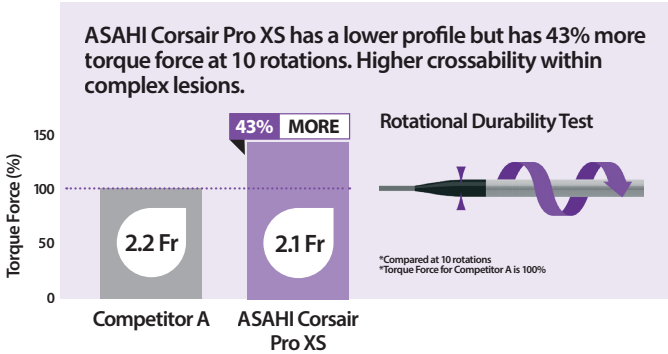
ASAHI Corsair Pro XS during retrograde procedure

### Lubricity Length

Longer and more durable hydrophilic coating for improved lubricity performance.



### Rotational Durability



### Tip Profile

Smaller tip entry profile. Lower profile and tip portion.



\*All the data were obtained by company standardized test, which may differ from industry standardized tests.  
\*All the data do not guarantee that all devices have exactly the same performance with the samples used for these tests.